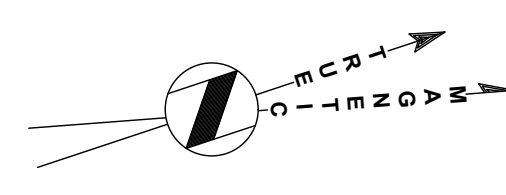
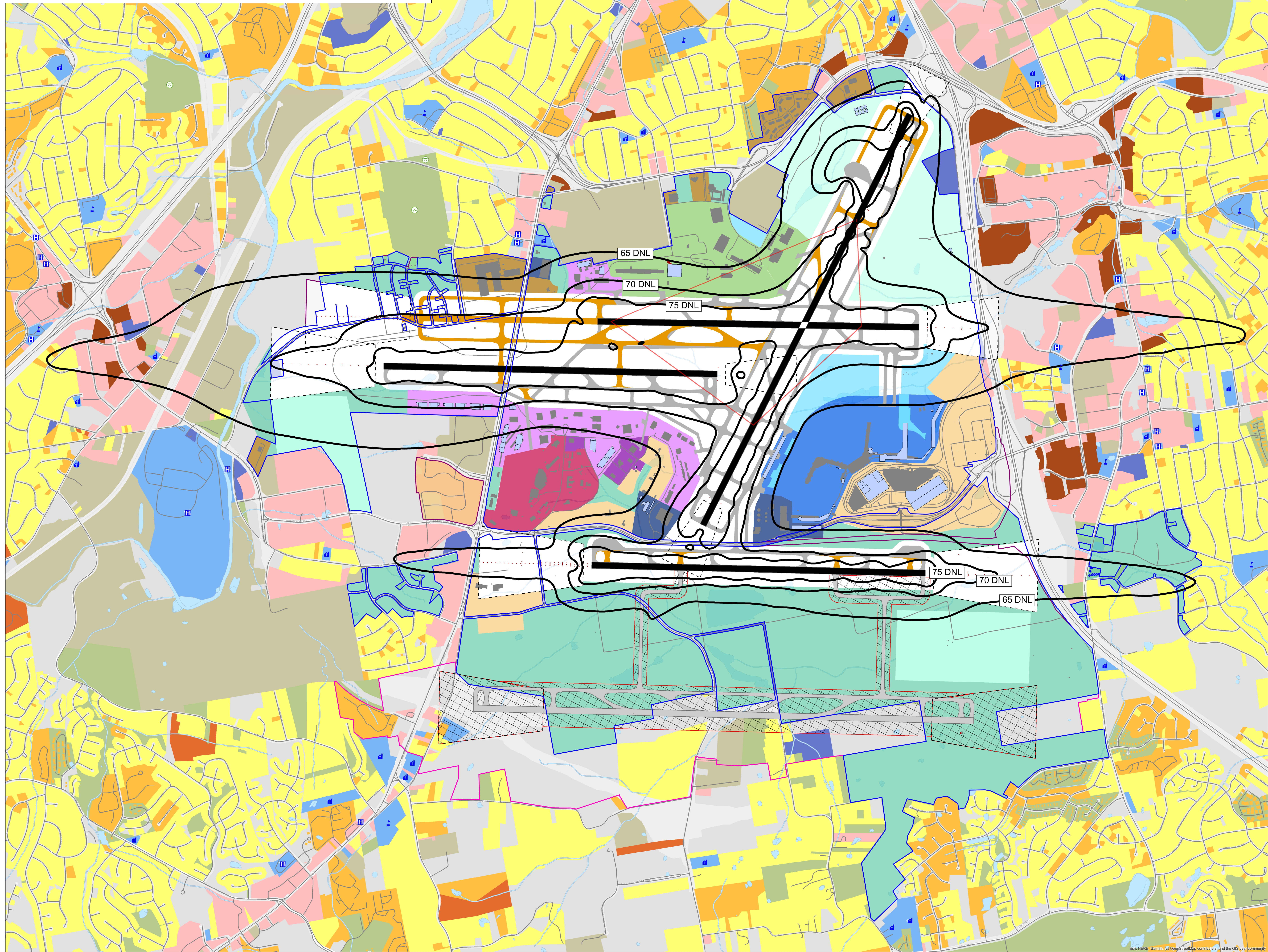


**Boundaries of local government:**  
 The entire airport property falls within the Davidson County boundary and is therefore regulated by Title 17 of the Metro Nashville/Davidson County Code of Ordinances

**Airport Overlay Zoning or Zoning restrictions:**  
 Metro Nashville/Davidson County Code of Ordinance Title 17 Article VI Airport Overlay District applies to BNA

**Notes**  
 1. Scale adjusted to capture the 65 DNL Contour.  
 2. Proposed Runway 2L Extension and Future Runway 3-21 are not included in 2025 Noise Contour.

  
 3° 53' W ± 0° 21'  
 Changing by 0° 3' W Per Year  
 June 7, 2019, NOAA



**PROJECT**  
 Nashville Int'l. Airport  
 Airport Layout Plan

**CLIENT**  
 Nashville International Airport  
 Metropolitan Nashville Airport Authority  
 140 BNA Park Drive  
 Suite 520  
 615.275.1675 tel  
 www.flynashville.com

**CONSULTANT**  
  
 AECOM Technical Services Inc.  
 1700 Market Street  
 Suite 1600  
 Philadelphia, Pennsylvania 19103  
 215.399.4300 tel  
 www.aecom.com  
 AECOM Technical Services Inc.  
 1000 Corporate Center Drive  
 Suite 250  
 Franklin, Tennessee 37067  
 315.771.2800 tel  
 www.aecom.com

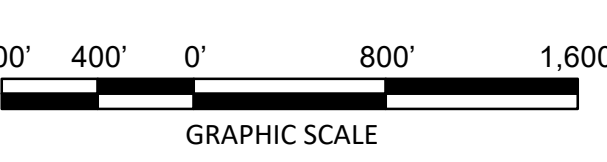
**REVISIONS**

No.	Revision Description	Date	Approved By	Done By

**LEGEND**

	Existing Building
	Proposed Building
	Existing Runway
	Proposed Runway/Taxiway
	Runway Visibility Zone
	Runway Protection Zone
	2025 Future Noise Contour*
	Property Lines
	Proposed Property Lines
	Future Property Lines
	Road
	Waterbodies
	Navigation Aids
<b>ON-AIRPORT LANDUSE</b>	
	Airfield
	Airport/Airline Support
	Cargo
	Deicing/Stormwater
	Future Development Area
	General Aviation
	Government
	Landside
	Military
	Non-Aviation
	Open Space
	Terminal
	Future Airfield
<b>OFF-AIRPORT LANDUSE</b>	
	Residential
	Multi-Family Residential
	Mobile Home Park
	Transient Lodging
	Public Use (Non-Compatible)
	Public Use (Compatible)
	Recreational / Open Space
	Commercial Use
	Manufacturing and Production
	Vacant / Undefined
	Hospital / Nursing Home
	Place of Worship
	Library
	Parks / Recreational Area
	School

\*Based on FAA approved 2025 Noise Exposure Map (NEM), February 20, 2020. This does not reflect the condition with proposed airfield improvements.



**PROJECT NUMBER**  
 60557445  
 PL-016  
 Land Use Plan And Noise  
 Contours  
 22-FEBRUARY-2021