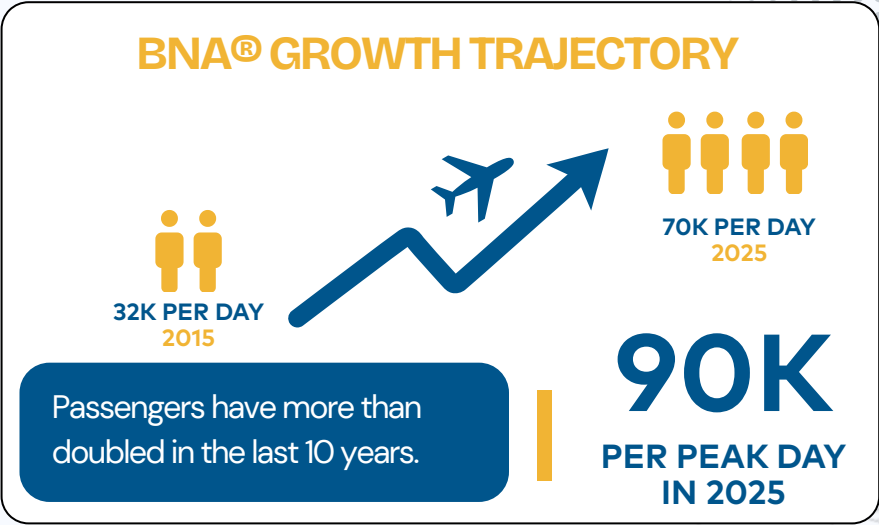


DEVELOPMENT AT A GLANCE

BNA® Vision	2017-2024
New Horizon I (Airside)	2022-2028
New Horizon II (Landside)	2022-2029
Terminal II	2024-2038

\$4.5 BILLION

DEVELOPMENT
BUDGET AND SCOPE
FROM 2017-2029



BNA
VISION

2017-2024
\$1.5 BILLION

✓ Necessary facilities for increased demand

✓ Heighten importance of international travel

✓ Transform airport into welcoming front door

Two new concourses

Parking garages & Ground Transportation Center

International Arrivals Facility

On-site hotel

Marketplace and Grand Lobby

Roadway improvements

BNA

New Horizon

PREPARING FOR
40 MILLION
PASSENGERS PER YEAR IN NEXT 10 YEARS

✓ Second major expansion

✓ Expand capacity of existing terminal

✓ Maintain seamless and efficient travel experience

NEW HORIZON I (AIRSIDE)
2024-2028
\$1.62 BILLION

Expand and improve baggage handling system

Expand ramp space for aircraft parking and deicing

Expand Concourse D with new gates and concessions

Build New Concourse A

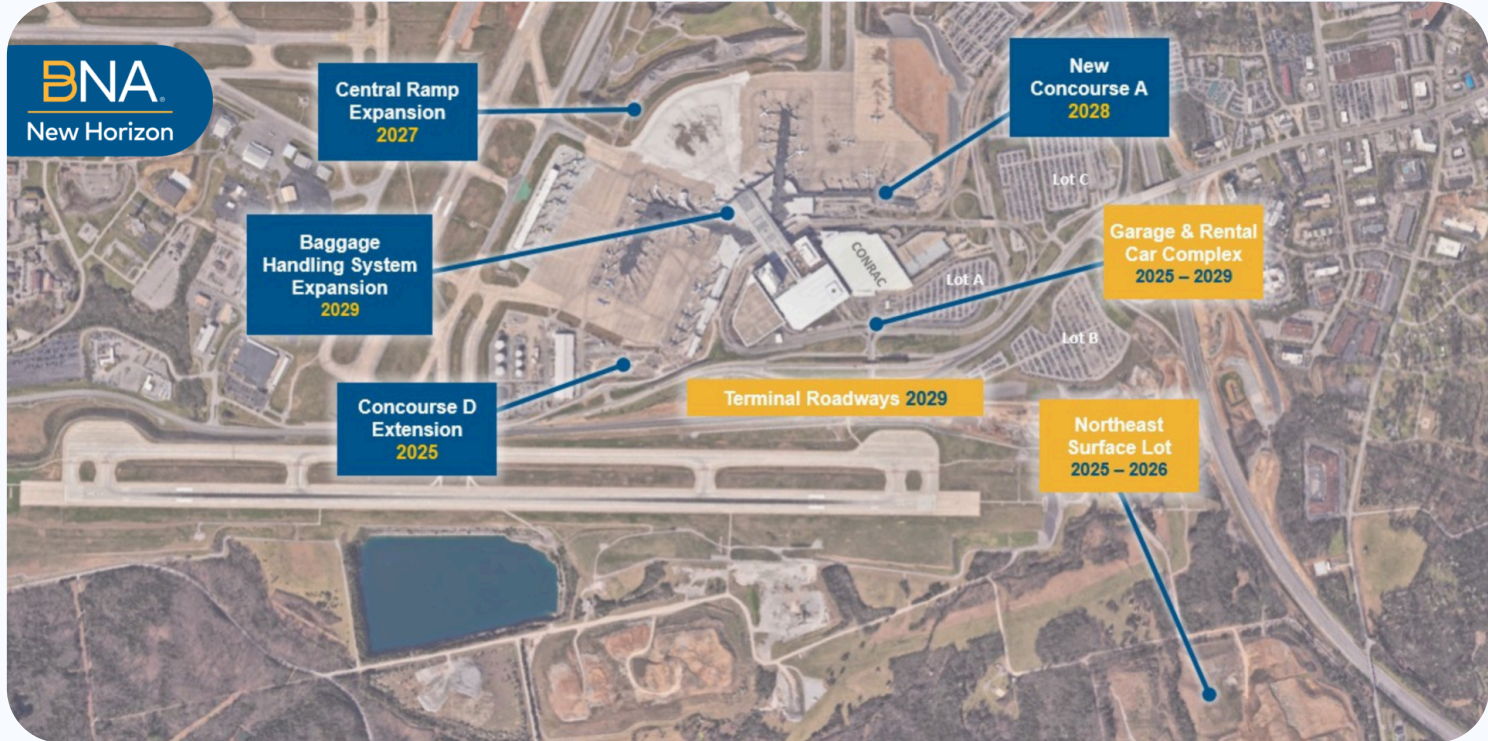
NEW HORIZON II (LANDSIDE)
2024-2029
\$1.34 BILLION

Expand employee parking and valet storage

Bigger and better rental car complex

Additional garage and conveniently located surface parking

Expand and improve terminal roadways



A NEW HORIZON FOR SUSTAINABILITY

Electrochromic Glass

Uses an electric charge to change opacity

Reusing Rocks

Recycling fill materials for use in future projects

Cooling System

Geothermal lake plate cooling system helps cool terminal

Parking and Transportation

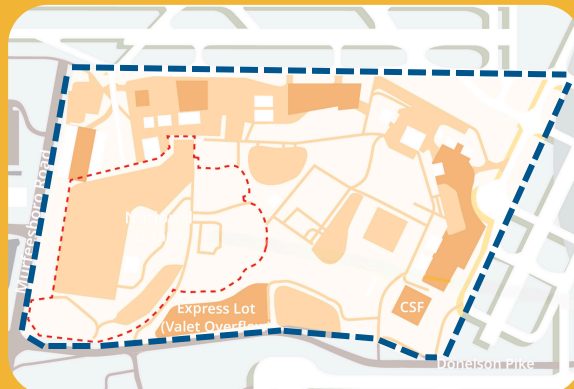
Parksmart is used to advance sustainable mobility.

BEYOND 40 MILLION

TERMINAL II

While we are still in the midst of the New Horizon construction programs, we are proactively planning for the next phase of growth with the development of Terminal II. A site has been selected for the second terminal, which will be a phased program over the next several decades. The key priorities for selecting a site included:

- Optimizing the passenger journey
- Managing vehicular and aircraft operations efficiently
- Ensuring cost-effective solutions that maintain our world-class standards
- Integrating sustainable practices



After careful analysis, a viable location has been identified between our major runways, specifically south of Runway 13/31. This 300+ acre site offers the optimal balance of accessibility, functionality, and future growth potential, ensuring that BNA remains a world-class facility.

OVER THE NEXT DECADE

- Finalizing conceptual layout for Terminal II
- Developing schedule and plan for facilities relocation
- Developing preliminary financial assessment
- Developing stakeholder communications plan

NEW HORIZON I, II & TERMINAL II GATE CAPACITY

FROM 70 GATES
UP TO 140 GATES
& BEYOND

